

СПИСОК ДЕТАЛЕЙ			
ЭЛЕМЕНТ	КОЛ.	ОБОЗНАЧЕНИЕ	ОПИСАНИЕ
9	4	Plate-1	
10	4	Clamp-1	
11	4	Bushing	
12	2	Side plate	
13	4	Threaded plate-2	
14	4	Clamp-2	
15	2	Base plate	
16	22	DIN 125 - A 13	Шайба
17	6	DIN 912 - M12 x 30	Винт с цилиндрической головкой
9	12	DIN 912 - M12 x 50	Винт с цилиндрической головкой
19	10	DIN 912 - M12 x 20	Винт с цилиндрической головкой
20	6	DIN 934 - M12	Шестигранная гайка

Please note that when installing the side plate, the frame will need to be drilled.
The side plate should not be installed if heavy tractor mounting equipment are not intended.

Разраб. Sergey Tsvetkov	Пров.	Дата утв.	Дата	Дата 28.11.2024	
			Clamp assemble		Редакция
					Лист 1 / 6

6 1 5 1 4 3 1 2 1

D

D

C

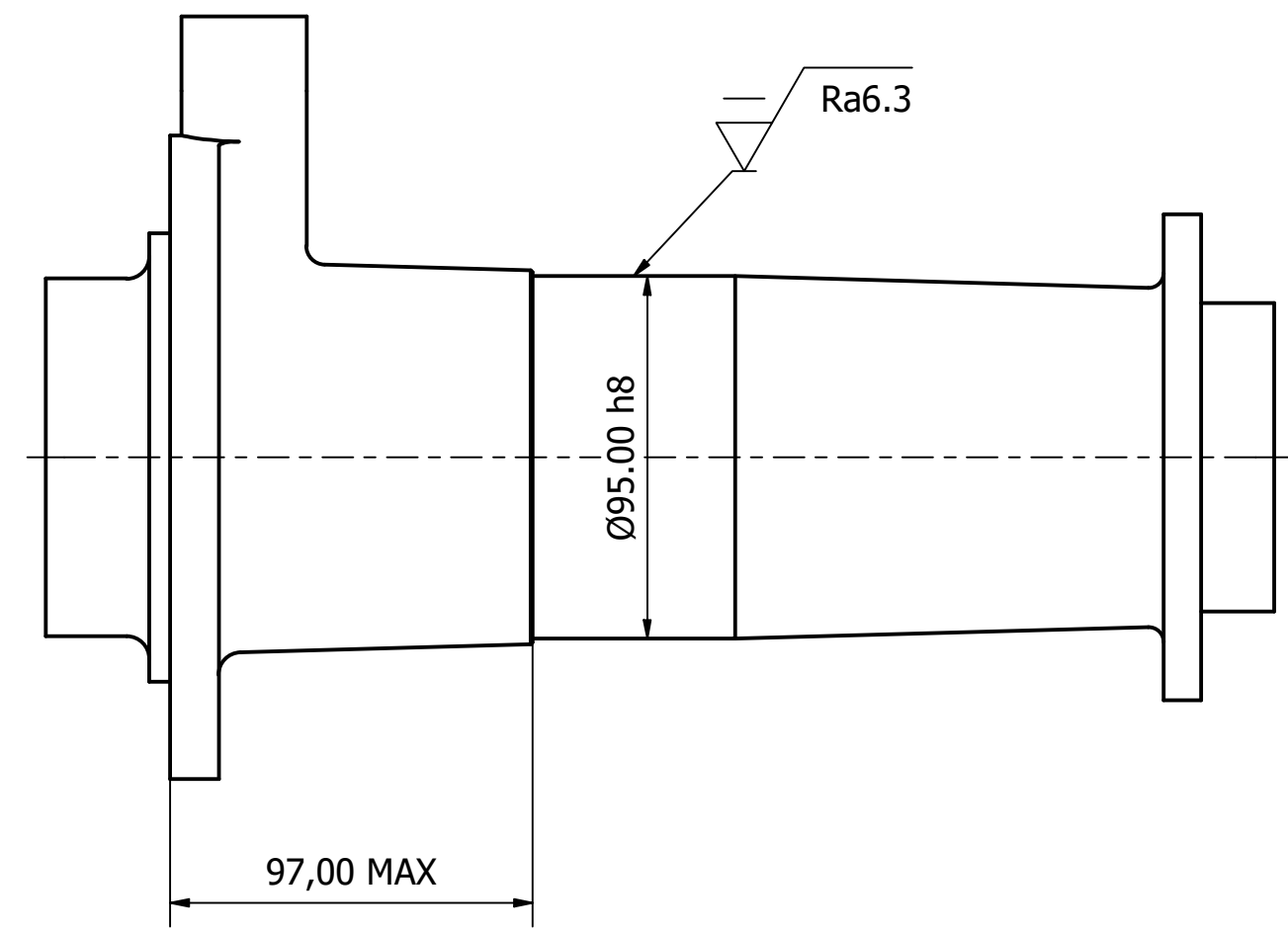
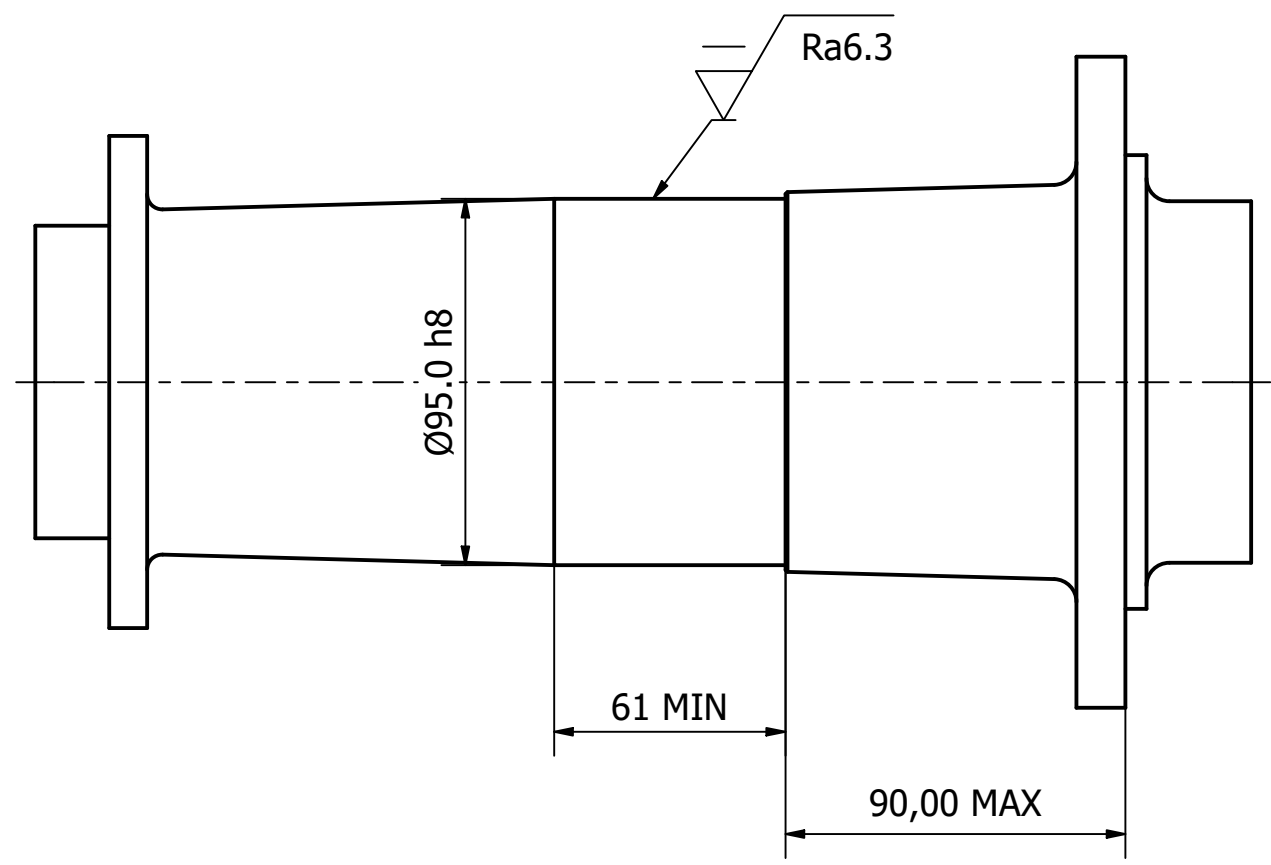
C

B

B

A

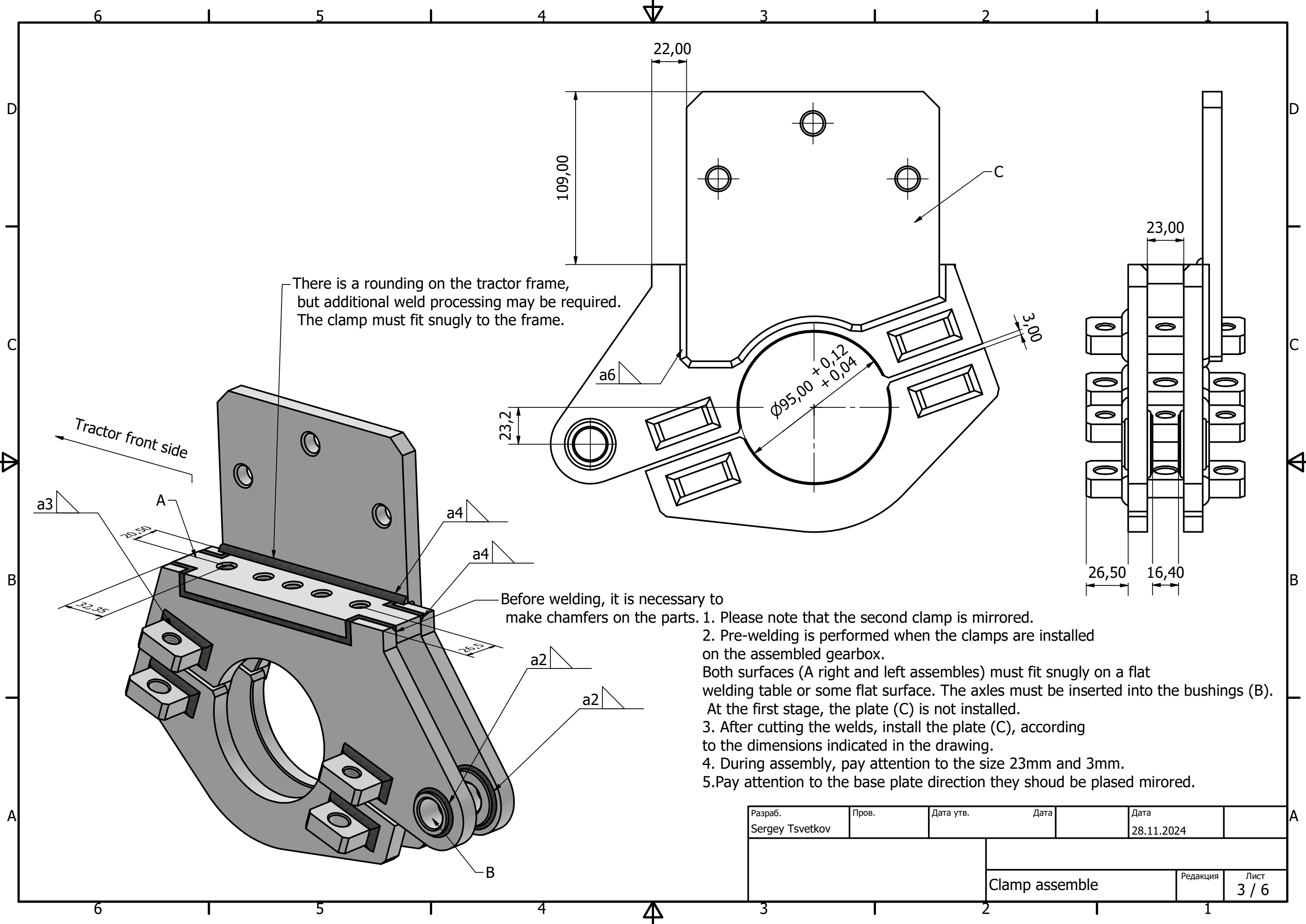
A



To install a set of clamps, you need first to remove the existing eyelets and cut the correct diameter on a lathe.

Разраб. Sergey Tsvetkov	Пров.	Дата утв.	Дата	Дата	
		Clamp assemble		Редакция	Лист 2 / 6

6 1 5 1 4 3 1 2 1

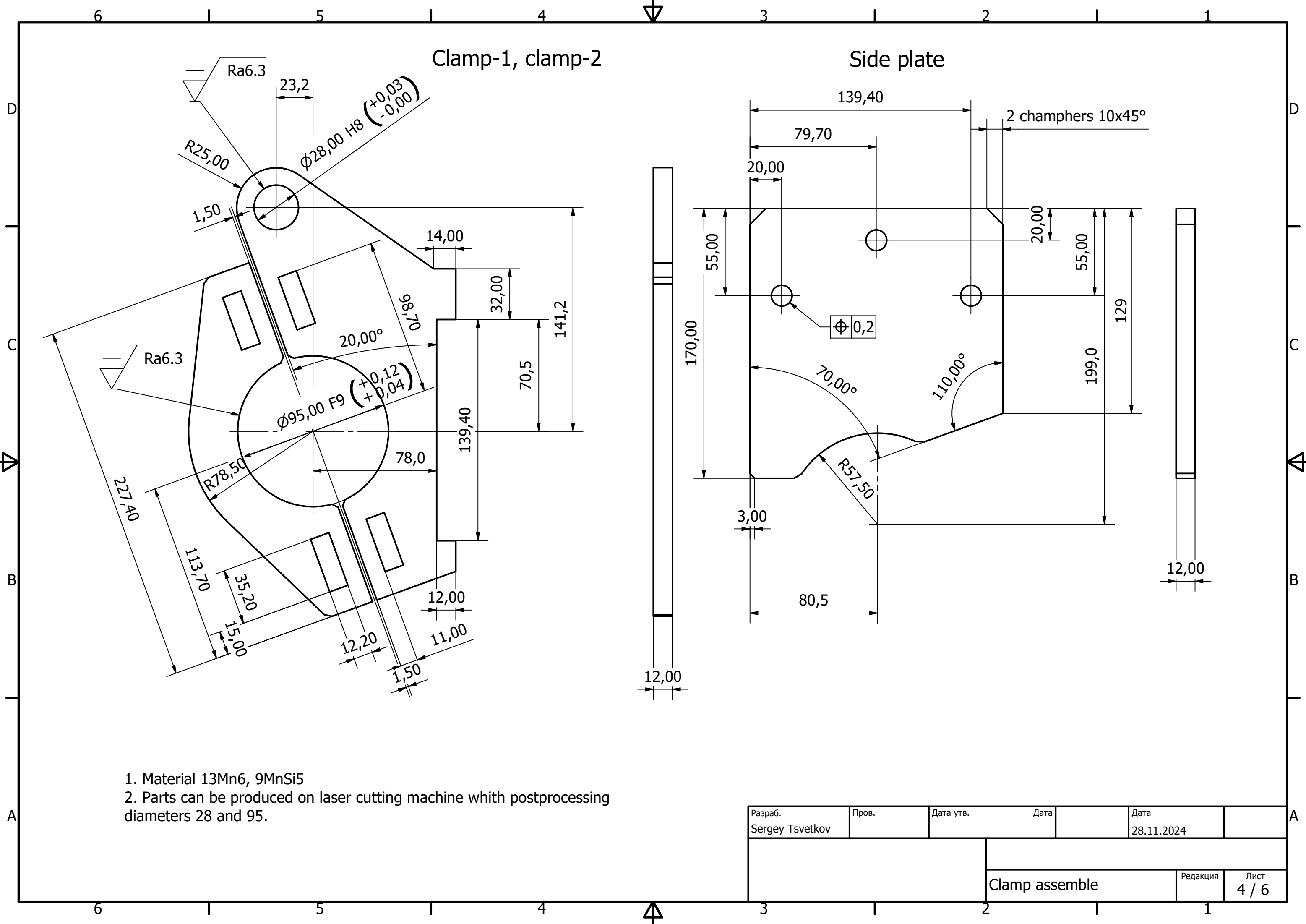


There is a rounding on the tractor frame, but additional weld processing may be required. The clamp must fit snugly to the frame.

Before welding, it is necessary to make chamfers on the parts.

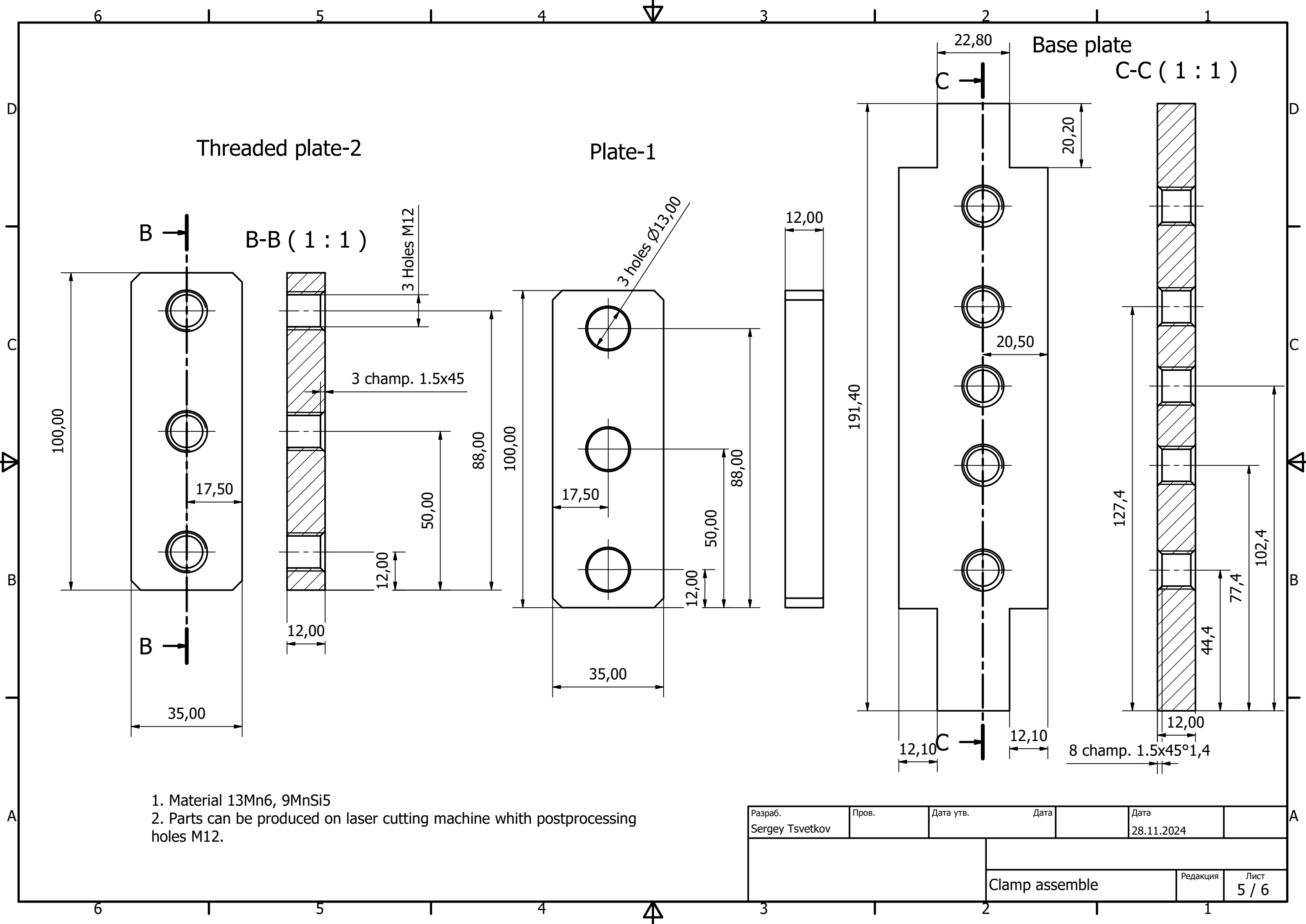
1. Please note that the second clamp is mirrored.
2. Pre-welding is performed when the clamps are installed on the assembled gearbox. Both surfaces (A right and left assemblies) must fit snugly on a flat welding table or some flat surface. The axles must be inserted into the bushings (B). At the first stage, the plate (C) is not installed.
3. After cutting the welds, install the plate (C), according to the dimensions indicated in the drawing.
4. During assembly, pay attention to the size 23mm and 3mm.
5. Pay attention to the base plate direction they should be placed mirrored.

Разраб. Sergey Tsvetkov	Пров.	Дата утв.	Дата	Дата 28.11.2024	
			Clamp assemble		Лист 3 / 6



1. Material 13Mn6, 9MnSi5
 2. Parts can be produced on laser cutting machine with postprocessing diameters 28 and 95.

Разраб. Sergey Tsvetkov	Пров.	Дата утв.	Дата	Дата 28.11.2024	
			Clamp assemble		Лист 4 / 6

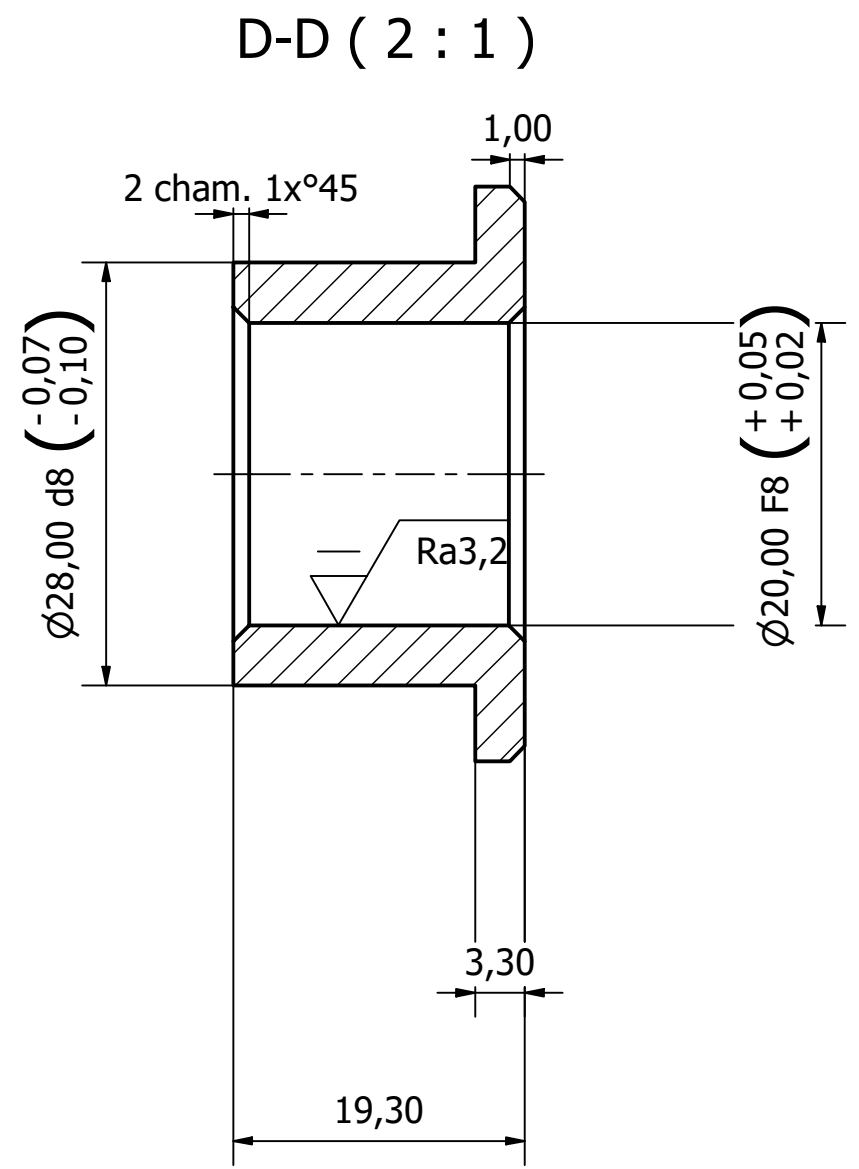
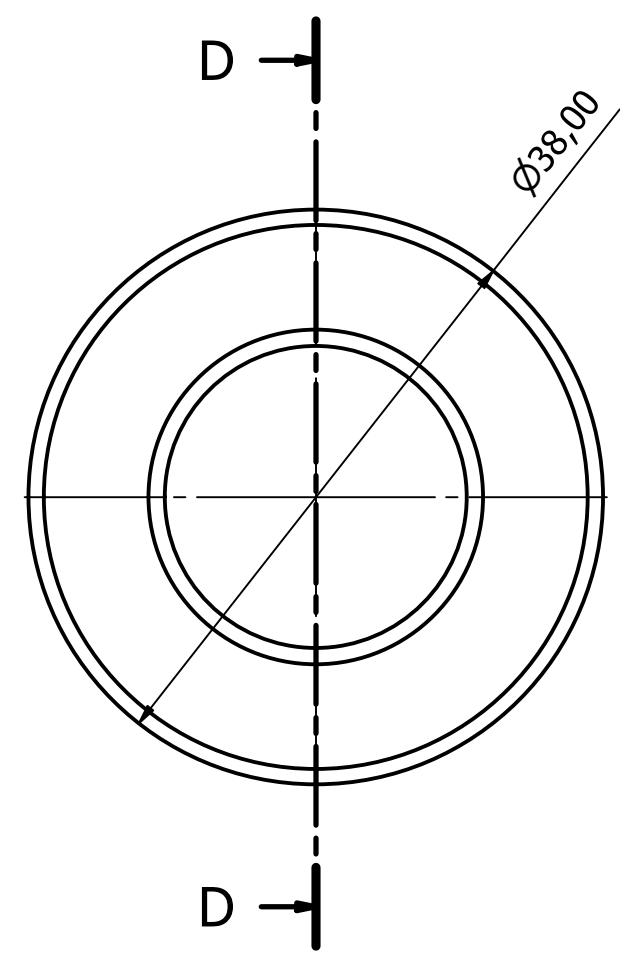


1. Material 13Mn6, 9MnSi5
 2. Parts can be produced on laser cutting machine with postprocessing holes M12.

Разраб. Sergey Tsvetkov	Пров.	Дата утв.	Дата	Дата 28.11.2024	
			Редакция		Лист 5 / 6
Clamp assemble					

Ra6,3

Bushing



1. Material C 22, C 22N2.

Разраб. Sergey Tsvetkov	Пров.	Дата утв.	Дата	Дата 28.11.2024	
			Clamp assemble		
			Редакция	Лист 6 / 6	